

Get better connected
with the next generation
of flexible connectors...



Dust-tight.
Perfect fit.
No leaks.
Snap-in convenience.
No hose clamps.



Distributed by Siftex Equipment Company Inc. 800.274.3839

BFM fitting is a registered trademark of BFM Global Ltd.

Get Better Connected!

Problem...



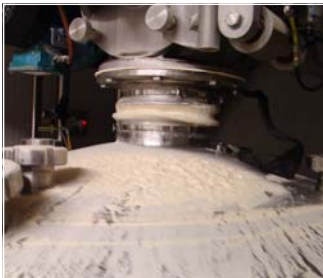
Product leaks...



Answer.



Perfect fit and seal.



Messy product build-up...

Improved dust control.
Safer plant operation.
Better sanitation.



Sanitary, no build-up.



Difficult,
time-consuming
installation...

Get better connected
in a snap with BFM Fitting!



Fast, easy snap-in,
No hose clamps.

See the BFM fitting system in action. Video available on website.

 **BFM**[®]
fitting
"Keeping You Connected"


63-03 & 20-25

SIFTEX 
GET BETTER CONNECTED
www.siftex.com

BFM Fitting Fact Sheet

1. Standard length connectors versus custom lengths.

BFM fitting manufactures its connectors in a standard length for each diameter spigot.

SPIGOT DIAMETER	STANDARD CONNECTOR LENGTH (CL)
100mm (4"); 125mm (5"); 150 mm (6")	150 mm (6")
All other diameters	200 mm (8")

Non-standard length connectors, including tapers, are available on a special order basis. In order to save time and money, it is recommended you adapt your BFM spigot installation to provide the installation gap (IG) which utilizes a standard length connector. When referring to the connector length (CL), do not include the length of the snap-band cuffs at either end of the connector.



2. Tool-release BFM fitting.

For industries which require it, a tool-release version of the BFM fitting system is available. The tool-release uses a small hole drilled in the spigot formed end. A rod is inserted to remove the connector from the spigot. For more information, ask your Siftex rep.



3. BFM fitting metal spigot materials.

BFM fitting spigots are available in three types of steel: **304 SS**; **316L SS**, and **mild steel**. Material certifications for the 304 and 316L are included in this brochure.

4. Control of electro-static discharge.

For applications where there is a possibility for static build-up, BFM fitting recommends using a static conductive wire to connect the two BFM fitting spigots together. Seeflex polyurethane connectors provides static dissipation of electro-static buildup.



GET BETTER CONNECTED

www.siftex.com

BFM Fitting Fact Sheet

5. Alternative uses for BFM fitting connectors

BFM fitting connectors are available in a cap and bag style. These are very effective replacements for rubber caps and inspection covers. In addition, the bags come in longer lengths for use on sifter “overs” outlets as a collection method. The operator can see the bag as it fills and easily snap it out to empty as needed.



6. Chemical and Temperature resistance

CONNECTOR MATERIAL	TEMPERATURE RANGE	CHEMICAL RESISTANCE
SEEFLEX	0° to 180° F	GOOD
SEEFLEX 400W	0° to 180° F	EXCELLENT
TEFLEX	-40° to 500° F	OUTSTANDING
LM4	0° to 300° F	VERY GOOD
WM12K	0° to 700° F	EXCELLENT
CAMLON	0° to 180° F	VERY GOOD

For a detailed list of the chemical resistance of elastomers, please visit the following web address:
<http://www.dupontelastomers.com/crg/nav.asp?page=tlargiGuide.asp>



7. Use of BFM fittings under vacuum and pressure.

Vacuum: BFM fittings can be used in vacuum applications. The connectors are available with snap-band cuffs which are rated to 40” W.G. The ideal vacuum application is one where the connector is either stationary or undergoing oscillating motion.



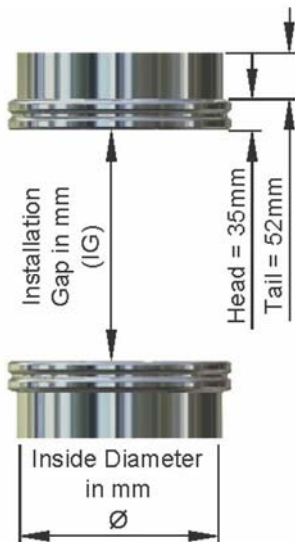
Pressure: BFM fittings are designed for positive pressure applications that are stationary or oscillating. The Seeflex material is extremely strong and capable of stretching 500% without rupture. We recommend the use of the white Camlon outer jacket over the Seeflex material to prevent “ballooning”

For all vacuum and pressure applications, please consult with your Siftex representative.



BFM Fitting Spigot Installation

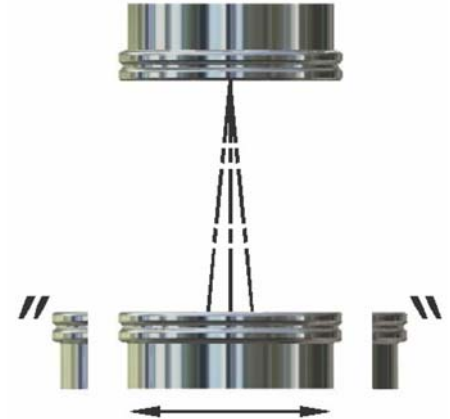
In-line



Offset



Oscillating



Installation Gap (IG) and Connector Length (CL)

When welding the BFM fitting spigots to your equipment, the installation gap (IG) must be accurately measured.

Use the formulas below as a guide to accommodate machine movement.

In-line static equipment: $IG = CL - 1/2"$ (Minimum)

Offset equipment: $IG = CL - 3/4"$ (Minimum)

Oscillating equipment: $IG = CL - 1.5"$ (Minimum)



The BFM spigot has a 2" long tail. It may be cut shorter or cut on an angle to fit your existing pipe work.



It is important to weld the spigot onto your pipe work with the **Installation Gap** and **Connector Length** in mind. Use of BFM standard length flexible connectors will save you time and money.

BFM Fitting Spigot Welding Information



DO NOT cut BFM™ Spigot and re-size before installation



Size spigot to pipe. Pipe circumference may need to be expanded or reduced to fit the BFM™ Spigot.



Avoid (if possible) cutting the tail length. If it is necessary to shorten the tail, do not cut the tail more than 1" unless absolutely necessary. Welding any closer than 1" to the formed end may result in shrinkage affecting the tolerance of fit between the flexible connector cuff into the BFM™ Spigot. Consult with Siftex prior to cutting.



Tack BFM™ Spigot to correct-sized pipe.



Peen the tacked joint to ensure correct fit.



Weld BFM™ Spigot on.
Dress and polish to required standards.



Be careful to ensure that the circumference of the formed end after fitting and welding, remains the same size as supplied, to ensure fitting tolerance of the connector.



BFM Fitting Options

Spigot Attachment Options

In addition to welding directly on to spouting, BFM Spigots may be attached using:

- QuickConnect™ modular flanges
- Tri-Clover™ sanitary clamp
- Standard flanges
- Compression couplings



Ask your Siftex representative for more information on these options and turnkey services to provide you with the attachment method designed for your application.



BFM Fitting Connectors

The connector length (CL) does not include the length of the snap-band cuffs at either end of the connector. For example, the 8" standard length connector measures 10-1/2" from end to end. The 6" standard length connector is 8-1/2" total.



CONNECTOR DIAMETER	STANDARD LENGTH
100mm 4"	150mm 6"
125mm 5"	150mm 6"
150mm 6"	150mm 6"
200mm 8"	200mm 8"
250mm 10"	200mm 8"
300mm 12"	200mm 8"
350mm 14"	200mm 8"
400mm 16"	200mm 8"
450mm 18"	200mm 8"
500mm 20"	200mm 8"
550mm 22"	200mm 8"
600mm 24"	200mm 8"
650mm 26"	200mm 8"

BFM Fitting Connector Installation



STEP 1

Ensure the BFM™ Spigot is clean and dry. Wiping a very thin layer of FDA lubricant on the inside makes connector snap-in very easy.



STEP 2

Seat the back of the connector into the BFM™ Spigot and release.



STEP 3

There is a possibility the seal will not fully snap out the first time, if so see Step 4.



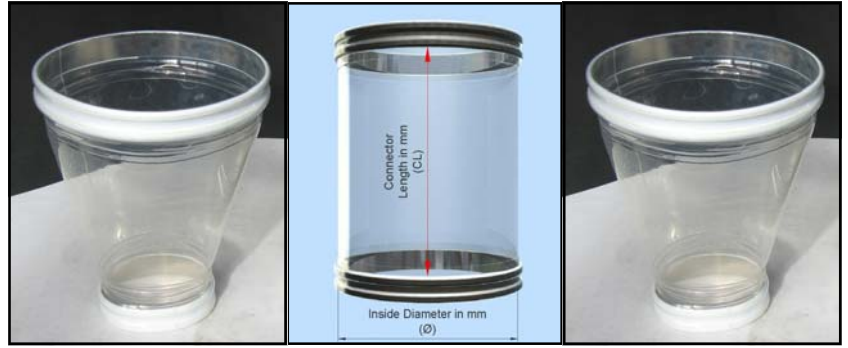
STEP 4

Push the seal toward the center of the fitting at a different point on the circumference.




STEP 5

COMPLETE.
The BFM Fitting™



LARGE DIA.	TAPERED CONNECTOR MINIMUM LENGTH (CL) PER DIAMETERS												
	550	500	450	400	350	300	250	200	150	100	x	100	x
650	550	500	450	400	350	300	250	200	150	100	x	100	x
600	500	450	400	350	300	250	200	150	100	x	100	100	100
550	450	400	350	300	250	200	150	100	x	100	100	150	150
500	400	350	300	250	200	150	100	x	100	100	150	200	200
450	350	300	250	200	150	100	x	100	100	150	200	250	250
400	300	250	200	150	100	x	100	100	150	200	250	300	300
350	300	250	200	150	100	x	100	100	150	200	250	300	350
300	250	200	150	100	x	100	100	150	200	250	300	350	350
250	200	150	100	x	100	100	150	200	250	300	350	400	400
200	150	100	x	100	100	150	200	250	300	350	400	450	450
150	100	x	100	100	150	200	250	300	350	400	450	500	500
125	100	x	100	100	200	200	250	300	350	400	450	500	550
100	x	100	100	150	200	250	300	350	350	400	450	500	550
SMALL DIA.	100	125	150	200	250	300	350	400	450	500	550	600	650

Example: a tapered connector measuring 350mm diameter x 125mm diameter has a **minimum connector length** of 250mm.



CONNECTOR MATERIAL SPECIFICATIONS

SEEFLEX

Best-selling BFM fitting connector material.
Clear polyester based thermoplastic polyurethane alloy.
Will not conduct static but provides static dissipation of electro-static buildup. Seeflex is not prone to fracture as a result of constant flexing as found in rotary sieves and sifters, etc...

Food grade: complies with FDA 21CFR 177.1680 and 177.2600.
Excellent abrasion resistance combined with a smooth welded seam makes Seeflex your first choice for dust-free processing.



SEEFLEX 040 PHYSICAL PROPERTIES

HARDNESS	85 Shore A
TEMP RANGE	0° to 180° F
ULTIMATE ELONGATION	500%
PERMEABILITY	0 Cfm

WALL THICKNESS	1 mm
LOW TEMP FLEXIBILITY	Good
TEAR STRENGTH	37.6 kN/m
FLEX MODULUS	@ 23°C: 4000 MPa

TENSILE STRENGTH	34.5 MPa
SURFACE FINISH	Gloss/Gloss
VOLUME RESISTIVITY	5.80×10^{10} ohms
SURFACE RESISTIVITY	6.10×10^{10} ohms

SEEFLEX 020 PHYSICAL PROPERTIES

HARDNESS	85 Shore A
TEMP RANGE	0° to 180° F
ULTIMATE ELONGATION	660%
PERMEABILITY	0 Cfm

WALL THICKNESS	0.5 mm
LOW TEMP FLEXIBILITY	Good
TEAR STRENGTH	7695 kg/m
FLEX MODULUS	@ 23°C: 4000 MPa

TENSILE STRENGTH	34.5 MPa
SURFACE FINISH	Gloss/Gloss
VOLUME RESISTIVITY	5.80×10^{10} ohms
SURFACE RESISTIVITY	6.10×10^{10} ohms

SEEFLEX 400W PHYSICAL PROPERTIES

HARDNESS	85 Shore A
TEMP RANGE	0° to 180° F
ULTIMATE ELONGATION	500%
PERMEABILITY	0 Cfm

WALL THICKNESS	1 mm
LOW TEMP FLEXIBILITY	Good
TEAR STRENGTH	37.6 kN/m
FLEX MODULUS	@ 23°C: 4000 MPa

NEW!



SEEFLEX 400W is designed for CIP solution exposure.

Outstanding resistance to caustic and acid. FDA CFR 177.1680; 3A (20-25) compliant. Translucent blue polyurethane offers excellent abrasion, flex fatigue and tear resistance. The first choice for superior hygiene and durability.

CONNECTOR MATERIAL SPECIFICATIONS



NOTE: Samples of the various BFM fitting connector materials are on the back pages of this brochure.



TEFLEX

1 micron expanded PTFE membrane on woven PTFE fabric is white in color and very flexible. Complies with FDA 21CFR 177.1680 and 177.2600.

Ideal for applications where:

1. The temperature can reach 500° F.
2. The process material covers the full pH scale.
TEFLEX (PTFE) connectors will not be affected by either extreme caustic or acid products.

TEFLEX PHYSICAL PROPERTIES

FIBRE AND SCRIM	PTFE	THREAD COUNT	114 x 82
TEMP RANGE	-40° to 500° F	WEAVE PATTERN	4 Harness Sateen
MINIMUM MULLEN BURST	450 psi	FABRIC WEIGHT	12 oz/ yd ²
PERMEABILITY	0.5 to 2.5 Cfm/ft ² @ 0.5" water gauge	CHEMICAL RESISTANCE	Outstanding



WM12K KEVLAR (ARAMID)

Medium-weight, very strong, self-extinguishing, dimensionally stable woven fabric. Offers excellent abrasion, puncture, chemical, flex fatigue and high temperature resistance. **Available as 020/Kevlar/020 "sandwich" construction for FDA applications (shown), as well as a single-ply all Kevlar connector.**

WM12K PHYSICAL PROPERTIES

CONSTRUCTION	Multi-filament plain weave	THREAD COUNT	17 x 16 per 25mm ²
TEMP RANGE	0° to 700° F	FINISH	Scoured and heat set
MINIMUM MULLEN BURST	450 psi	FABRIC WEIGHT	460 g / m ²
PERMEABILITY	0 Cfm	COLOR	Yellow



CONNECTOR MATERIAL SPECIFICATIONS

LM4 POLYESTER

White plain weave polyester fabric offers good particle release and smooth finish. Very low air permeability combined with excellent flex fatigue resistance. Complies with FDA 21CFR 177.1630

LM4 PHYSICAL PROPERTIES

CONSTRUCTION	Plain Weave
FIBRE	100% Polyester
MINIMUM MULLEN BURST	450 psi
PERMEABILITY	0.5 to 1 Cfm/ft ² @ 0.5" water gauge

THREAD COUNT	48 x 32
TENSILE STRENGTH	Warp: 426 psi Weft: 507 psi
FABRIC WEIGHT	11 oz/ yd ²
TEMP RANGE	0° to 300° F



CAMLON FOOD GRADE PVC

White, non-permeable PVC coated polyester fabric is suitable for dust, air-handling, and fumes conveyance. Complies with FDA 21CFR 177.1950.

CAMLON PVC PHYSICAL PROPERTIES

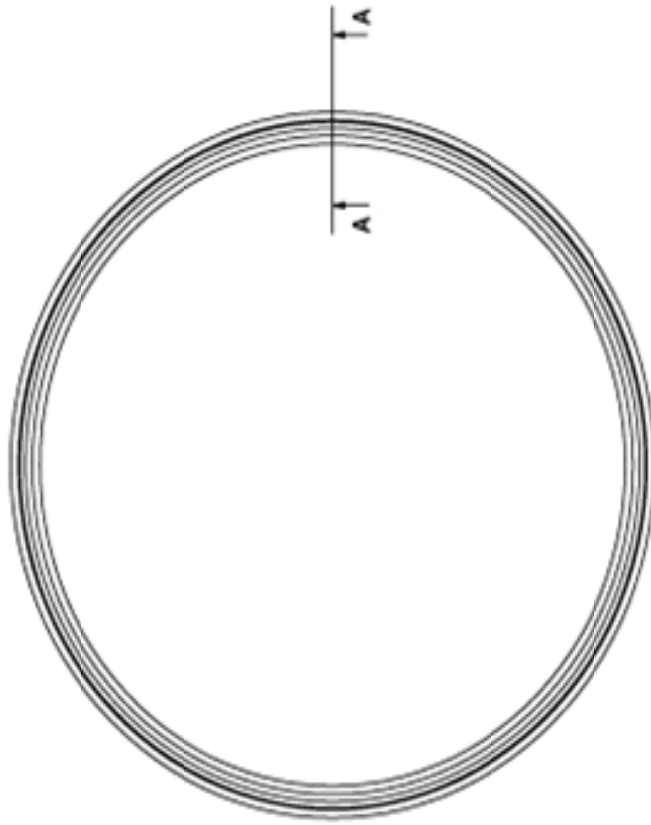
CONSTRUCTION	PVC with Polyester Scrim
TEMP RANGE	0° to 180° F
MINIMUM MULLEN BURST	300 psi
PERMEABILITY	0 Cfm



NOTE: Samples of the various BFM fitting connector materials are on the back pages of this brochure.



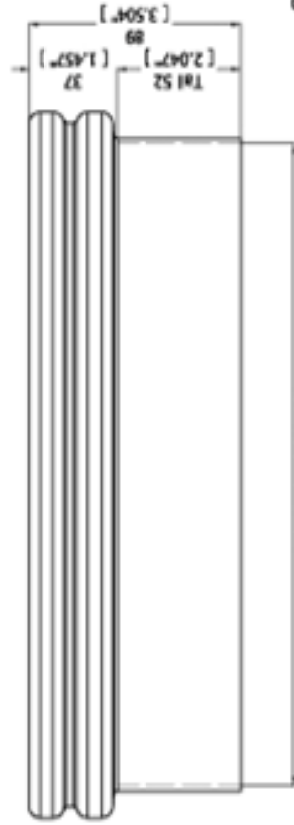
BFM FITTING SPIGOT DRAWING



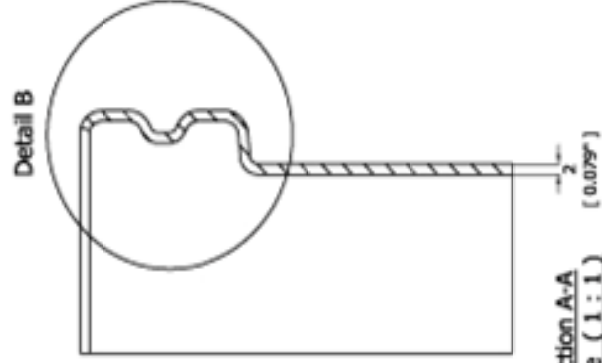
Plan



Isometric Representation
Scale (1:3)



Dimension 'X' Inside
Elevation



Section A-A
Scale (1:1)

Detail B



Detail B


Dimension 'X' (Diameter Ø)	
mm	inches
100	3.937
150	5.906
200	7.874
250	9.842
300	11.811
350	13.779
400	15.748
450	17.716
500	19.685
600	23.622
650	25.590

NOTE:
Section A-A & Detail B are common to all
spigots in the BFM Connector Range



FILTERCORD INTERNATIONAL LTD.
 2000 WILSON ROAD, SUITE 100, MISSISSAUGA, ONTARIO L4X 1L7, CANADA
 TEL: (905) 882-7748 FAX: (905) 882-7749
 WWW: www.filtercord.com

CONFIDENTIAL
 This drawing is the property of Filtercord International Ltd. and is not to be used for any other purpose without the written consent of Filtercord International Ltd.

Do Not Scale
 Drawing is in
 Dwg/A, A3K
 All Dimensions in
 millimeters
 Third Angle Projection

BFM Standard Parts
 BFM Spigot (ø250)
 Spigot Details

Drawing Number
BFM Spigot (ø250)
 Drawn By
 Neil Markham
 Drawn Date
 19/09/06
 Sheet Number
 1 of 1
 Approved By
 Scale
 1:2
 Sheet Size
A3

www.filtercord.com

BFM FITTING SPIGOT 304SS CERTIFICATION

MILL'S INSPECTION CERTIFICATE

CERTIFICATE NO.: YS-980477

CUSTOMER: SANWA PTY LTD

INVOICE NO.: YS-07242009-3

L/C NO.: A/2009151941

DESCRIPTION: COLD ROLLED STAINLESS STEEL SHEETS

AS PER SANWA ORDER 11793

YUE SENG INDUSTRIAL CO., LTD

NO. 12 LU KUNG NORTH 1ST ROAD

LU-KANG, CHANGHUA HSIEN, TAIWAN

TEL: 886-4-7812888 FAX: 886-4-7812688

DATE: 24 JUL, 2008

P/L NO.	SIZE	UNIT(COIL/PCS)	N.W. (KG)	TYPE/FINISH	HEAT NO.	REFERENCE NO.
1	0.55MMX1219MMX2438MM	150	1944	304-2B/PAPER	9803289YU -980 70435	SSWNZ9806A-01A
2	0.90MMX1219MMX2600MM	86	1945	304-6A/PE	9802026YU -980 70601	SSWNZ9806A-02A
3	1.20MMX1219MMX2438MM	68	1923	304-2B/PE	9806320TM -980 61188	SSWNZ9806A-03A
4	1.20MMX1219MMX2438MM	68	1923	304-2B/PE	9806320TM -980 61188	SSWNZ9806A-04A
5	1.50MMX1219MMX2438MM	55	1944	304-2B/PE	9806437YU -980 70680	SSWNZ9806A-05A
6	1.50MMX1219MMX2438MM	55	1944	304-2B/PE	9806437YU -980 70680	SSWNZ9806A-06A
7	2.00MMX1219MMX2438MM	41	1933	304-2B/PE	9806318TM -980 70403	SSWNZ9806A-07A
8	2.00MMX1219MMX2438MM	41	1933	304-2B/PE	9806318TM -980 70403	SSWNZ9806A-08A
9	0.90MMX1219MMX2600MM	86	1945	304-NO.4/PE	9806293TM -980 70498	SSWNZ9806A-09A
10	0.90MMX1219MMX3740MM	59	1920	304-NO.4/PE	9806293TM -980 70498	SSWNZ9806A-10A

Mechanical Test										
P/L NO.	C	Si	Mn	P	S	Ni	Cr	N	Cu	Me
1	0.046	0.470	1.140	0.037	0.005	8.080	18.21	0.0290	0.2700	0.140
2	0.047	0.470	1.190	0.035	0.008	8.020	18.07	0.0210	0.3900	0.230
3	0.041	0.550	1.230	0.026	0.001	8.030	18.22	-	-	-
4	0.041	0.550	1.230	0.026	0.001	8.030	18.22	-	-	-
5	0.047	0.490	1.160	0.035	0.001	8.020	18.22	0.0240	0.2900	0.100
6	0.047	0.490	1.160	0.035	0.001	8.020	18.22	0.0240	0.2900	0.100
7	0.044	0.540	1.220	0.029	0.006	8.010	18.28	-	-	-
8	0.044	0.540	1.220	0.029	0.006	8.010	18.28	-	-	-
9	0.040	0.560	1.220	0.027	0.004	8.010	18.12	-	-	-
10	0.040	0.560	1.220	0.027	0.004	8.010	18.12	-	-	-

Mechanical Test			
P/L NO.	Y.S.(0.2%) N/mm ²	T.S. N/mm ²	Elongation %
1	248	588	58
2	275	658	53
3	283	628	60
4	283	628	60
5	308	671	51
6	308	671	51
7	305	613	60
8	305	613	60
9	258	634	60
10	258	634	60

Hardness HV	
P/L NO.	Hardness HV
1	155.0
2	164.0
3	161.0
4	161.0
5	166.0
6	166.0
7	158.0
8	158.0
9	156.0
10	156.0

Remark: 1. We hereby certify that the products described herein have been manufactured and tested with satisfactory results in accordance with the requirement of the above material specification.

2. As per ASTM A240/480 standard.

3. The material described above has been detected with free irradiation.

Q.C. MANAGER

C. Y. Chang

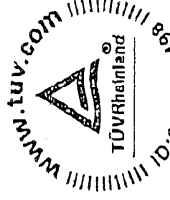
BFM FITTING SPIGOT 316L CERTIFICATION



允強實業股份有限公司
YEUN CHYANG INDUSTRIAL CO., LTD.
 地址：彰化縣溪州鄉莿眉村中山路四段270號
 電話：(04)8899666 傳真：(04)8899770
 No.270, Sec.4, Juagsban Rd., Sujou Shiang, Chang-Hwa, Taiwan, R.O.C.

Inspection Certificate

檢驗證明書



ISO 9001 : 2000
 NO. 01 100 056299
 P 1

No. (編號) YC-1010393 01 296110316-1 MILL'S QUALITY TEST CERTIFICATE

Messrs (客戶名稱) STEMCOR AUSTRALIA PTY LTD

Date (日期) JAN/24/2008

Contract No. (訂單號碼) 20/94830		Invoice No. (發票號碼)		Specification (規格)		ASTM		AISI		Type (鋼種)		AISI		
Description (產品名稱) PRIME COLD ROLLED STAINLESS STEEL SHEET		Quantity (數量)		Heat No. (爐號)		ASTM		AISI		Type (鋼種)		FINISH (表面情形)		
Item No./ Packing No.	Size (產品尺寸)	Pcs	Weight (重量)	Y.S. (降伏強度)	T.S. (抗拉強度)	Elongation (伸長率)%	Hardness HRB (硬度測試)	Flattening Test (壓扁測試)	Solution Heat Treatment (退火處理)	Y.S. (降伏強度)	T.S. (抗拉強度)	Elongation (伸長率)%	Hardness HRB (硬度測試)	
16	1.500mm X 1219.0mm X 2438mm	42	1470.00KG	170	485	40	95.00			314	605	51.00	78.00	
17	1.500mm X 1219.0mm X 2438mm	42	1468.00KG	314	605	51.00	78.00			314	605	51.00	78.00	
18	2.000mm X 1219.0mm X 2438mm	27	1264.00KG	323	609	52.00	80.00			323	609	52.00	80.00	
19	2.000mm X 1219.0mm X 2438mm	27	1272.00KG	323	609	52.00	80.00			323	609	52.00	80.00	
20	2.000mm X 1219.0mm X 2438mm	27	1270.00KG	323	609	52.00	80.00			323	609	52.00	80.00	
Chemical Composition (化學成份)														
Item No./ Packing No.	C (碳)	Si (矽)	Mn (錳)	P (磷)	S (硫)	NI (鎳)	Cr (鉻)	Mo (鉬)	N (氮)	Cu (銅)	Y.S. (降伏強度)	T.S. (抗拉強度)	Elongation (伸長率)%	Hardness HRB (硬度測試)
Max. 上限	0.030	0.750	2.000	0.045	0.030	14.00	18.00	3.000	0.100		170	485	40	95.00
Min. 下限						10.00	16.00	2.000						
16	0.019	0.530	0.800	0.039	0.002	10.06	16.97	2.040	0.010		314	605	51.00	78.00
17	0.019	0.530	0.800	0.039	0.002	10.06	16.37	2.040	0.010		314	605	51.00	78.00
18	0.022	0.600	0.830	0.038	0.001	10.09	16.40	2.060	0.015		323	609	52.00	80.00
19	0.022	0.600	0.830	0.038	0.001	10.09	16.40	2.060	0.015		323	609	52.00	80.00
20	0.022	0.600	0.830	0.038	0.001	10.09	16.40	2.060	0.015		323	609	52.00	80.00

Remarks: (備註) BE ACCORDING TO EN 10204/3.1

Works Inspector

MQ79
 JAN 21 2008
 MQ82

We hereby certify that material described herein has been manufactured and tested with satisfactory results in accordance with the requirements of the above material specification.

Initially Issued: 6/29/2007

Authorization No.: 1437



This Is To Certify That

Filtercorp International Limited

PO Box 66-080, Beach Haven, Auckland, 0749 NEW ZEALAND

Is hereby authorized to continue to apply the 3-A Symbol to the models of equipment, conforming to 3-A Sanitary Standards for:

Sanitary Fittings, Number: 63-03, set forth below:

Model Designations: BFM™ Fitting

Valid through: December 31, 2007

Timothy R. Rugh

Executive Director, 3-A Sanitary Standards, Inc.

The issuance of this authorization for the use of the 3-A Symbol is based upon the voluntary certification, by the applicant for it, that the equipment listed above complies fully with the 3-A Sanitary Standards designated. Legal responsibility for compliance is solely that of the holder of this Certificate of Authorization, and 3-A Sanitary Standards, Inc. does not warrant that the holder of an authorization at all times complies with the provisions of the said 3-A Sanitary Standards. This in no way affects the responsibility of 3-A Sanitary Standards, Inc. to take appropriate action in cases in which evidence of nonconformance has been established.

Initially Issued: 10/20/2008

Authorization No.: 1485



This Is To Certify That

Filtercorp International Ltd
22-24 Bay Park Place, Beach Haven, Auckland 1310 NEW ZEALAND

Is hereby authorized to continue to apply the 3-A Symbol to the models of equipment, conforming to 3-A Sanitary Standards for:

Multiple Use Plastic Materials, Number: 20-25, set forth below:
Model Designations: Seeflex 040

Valid through: December 31, 2009

Timothy R. Rugh
Executive Director, 3-A Sanitary Standards, Inc.

The issuance of this authorization for the use of the 3-A Symbol is based upon the voluntary certification, by the applicant for it, that the equipment listed above complies fully with the 3-A Sanitary Standards designated. Legal responsibility for compliance is solely that of the holder of this Certificate of Authorization, and 3-A Sanitary Standards, Inc. does not warrant that the holder of an authorization at all times complies with the provisions of the said 3-A Sanitary Standards. This in no way affects the responsibility of 3-A Sanitary Standards, Inc. to take appropriate action in such cases in which evidence of nonconformance has been established.

APPLICATION QUESTIONNAIRE

In order to provide the correct flexible connector we require the following information.

Please complete as fully as possible. Fax to 860-289-8744



CONTACT INFO

Company	Date
Contact	Phone
Location	Fax
Email address	

APPLICATION DETAILS

Application Dimensions:	Circle one		Square / Rectangle		
Top Opening: inches	Diameter	Circumference	Rectangle: _____" x _____"		
Bottom Opening: inches	Diameter	Circumference	Rectangle: _____" x _____"		
Connector Length: inches	<i>Include length for clamp area</i>				
Pipe-work offset?	Yes	No	Offset in Inches:		
Material being handled:					
	Circle one				
Material form:	Powder	Pellet	Granule	Slurry	Liquid
Abrasive characteristics:	High	Medium	Low		
Chemical attack / CIP	Acid	Caustic	Salt	Solution %: _____	
FDA-acceptable application?	Yes	No			
Temperature range:	Normal operation:		° F	Surge condition: ° F	
Pressure in pipe-work?	Yes	No	Max PSI:		
Vacuum in pipe-work?	Yes	No	Inches of Hg:		
Weighing application?	Yes	No	Batch weight: lbs.		
Vibratory / Gyratory equipment	Yes	No	Throw:	RPM:	

SIFTEX EQUIPMENT COMPANY, INC. (800) 274-3839 • (860) 289-8779 • (860) 289-8744 FAX